

COMPANY:	DESCRIPTION:	MODEL NO.:	REV.
DRAWN:	CHECKED:	APPROVED:	DATE: 3 AUG 2K

REPLACEMENT PARTS LIST

ITEM	PART NO	DASH	DESCRIPTION	REFERENCE NO
1	11-370001	05	Plastic: PVC Bracket (428C)	
2	11-370011	05	Plastic: Volume Bracket (428C)	
3	11-370021	05	Plastic: Gear (428C)	
4	11-370031	05	Plastic: Volume Gear (428C)	
5	11-370041	05	Plastic: PVC Gear (428C)	
6	11-370051	05	Plastic: Display Bracket (428C)	
7	11-360442	01	AM BAR HOLDER 5x13x15	
8	11-370451	05	Plastic: LED Bracket (428C)	
9	12-360005	01	Eyelet : 2x3mm	
10	12-360001	02	Heat -Sink For TEA-2025B	
11	12-360002	01	Heat -Sink For SIA2206D01-D0	
12	12-360323	01	FUSE HOLDER(FC-001-N) (300/323)	
13	12-360004	01	Battery Spring(-)	
14	12-202808	01	Copper Wire 0.8mm 10+8+10mm U TYPE	
15	15-100505	01	FM Sponge : 10x5x5mm	
16	16-203008	PWA	Screw: PWA3X8 Tapping Washer Φ8mm	
17	16-362604	KM	Screw: KM2.6X4 Machine	
18	16-363008	PA	Screw : PA3x8 Tapping	
19	27-36994VO	71Y	Main PCB & KEY PCB 300X145.5X1.6mm UL 94V0	
20	27-36294HB	71Y	P/R PCB 69X63X1.6mm UL 94HB	
21	27-36494HB	71Y	PCB NE-805 Battery Plate Board	
22			149X68X1.6mm UL 94HB	LCD601
23	28-FD2256	AP	NEW LCD (FD-2256AP)	
24	29-509286	02	IC: KS9286 (S5L9286-F02-TORO)	IC903
25	29-104XD8	01	IC: S3P70F4XD8-AVB4	IC902
26	29-09258D	01	IC: KA9258D	IC901
27	29-509226	01	IC: S1L9226X01	IC904
28	29-12003P	01	IC: TA2003P	IC101
29	29-12206D0	01	IC: SIA2206D01-D0	IC401
30	29-27343AP	01	IC: TA7343AP	IC102
31	29-107312	01	IC: AN7312	IC201
32	30-209015	00	Transistor: KTC9015C (KA1226 30-201226-00)	Q907. 30-201226-00为30-209015-00的代用料
33	30-209014	00	Transistor: KTC9014C	Q201.401.402.403.404.903
34	30-208050	00	Transistor: KTC8050C	Q202.902
35	30-200882	00	Transistor: KSD882	Q501
36	30-208550	00	Transistor: KTC8550C	Q901
37	30-6038TM	00	Infrared Sensor Moudle FM-6038TM2	remote
38	31-304001	00	Diode: IN4001	D501.502.503.504.
39	31-044148	00	Diode: IN4148	D901.902.903.904.601.603.
40	31-441919	00	Diode: 9.1V	ZD501
41	31-521353	00	LED Φ3mm(RED) (SHORT)	LED601.602

REPLACEMENT PARTS LIST

ITEM	PART NO	DASH	DESCRIPTION	REFERENCE NO
42	32-104401	01	BIAS Osc: N104401 Yellow	T1
43	32-052301	01	AM Osc: N052301A Red	T101
44	32-053201	01	FM IF: C053201 Orange	T102
45	33-306506	00	FM Coil Φ 3X6.5X0.6mm Clockwise	L101
46	33-453507	00	FM Coil Φ 4.5X3.5X0.7mm Clockwise	L104
47	33-452507	00	FM Coil Φ 4.5X2.5X0.7mm Clockwise	L105
48	33-112012	01	AM Coil 120:12TM1 For 5X13X55	
49			Lead Wire 1L:60mm(Natural) 3L:110mm(The Other)	
50	34-111502	00	Semi-Fixed(PH085) 5KB	VR101
51	34-131503	00	Rotary Volume 50KBx2 RB1601G	VR401
52			OXOB-HA1-B503-SO-EB100B070 805	
53	35-43D07G8SA	00	Slide Switch SS43D07-G8S Seiko	SW101.402
54	35-22F12G9	00	Slide Switch SK22F12-G9	SW401 (AB制)
55	35-PS92D01	00	Rec Switch Ps92D01 (Shorting)	SW201
56	35-002213	00	Push Switch 2213 8.5X8.5 Selflock	SW405
57	35-4113FH	00	Tact Switch DT4113FH H5.0mm 250+/-30kgf	SW601.602.603.604.605.606
58	36-126E20	00	PVC 126/20PF FA-126E20DTX(BK) Tung Tat	PVC101
59	40-155135	00	Ferrite Bar:5X13X55mm	
60	42-145504	00	Ceramic Filter AM SFU455B "Murata"	CF102
61	42-110701	00	Ceramic Filter FM FFE1070MA11 (Red)(TDK)	CF101 (42-110701-01 为代用料)
62	42-316931	00	Ceramic Resonator 16.93MHZ	X901
63	44-2418120	02	WAFER 2P 2.0MM 180C	CON904.
64	44-2418120	03	WAFER 3P 2.0MM 180C	CON401
65	44-112543	03	WAFER 3P 2.0MM 180C RED	CON404.
66	44-2418120	04	WAFER 4P 2.0MM 180C	CON101.CON402
67	44-2409020	05	WAFER 5P 2.0MM 90C	CON604
68	44-2418120	06	WAFER 6P 2.0MM 180C	CON403
69	44-2409020	08	WAFER 8P 2.0MM 90C	CON607
70	44-2418110	16	WAFER 16P 1.0MM 90C FCC	CON903
71	44-3506202	00	Stereo Jack EJ-3506-202 W/SW	
72	51-125116	01	T 1.6L 250V Φ 5x20mm FUSE VDE Semko APP	
73	W-128010	02	Jumper Wire: UL1007 #28 Red 100mm	
74	W-828023	51	2Pin Single Shield Wire:UL1533 #28 230mm	
75	W-226017	04	4Pin Wire:UL1007 #26 170mm	
76			W/HOUSING JS-1124-4 2.0 PITCH	
77	W-826015	04	4Pin Wire:UL2651 #26 150mm	
78			W/HOUSING JS-1124-4 2.0 PITCH	
79				
80				
81				

REPLACEMENT PARTS LIST

ITEM	PART NO	DASH	DESCRIPTION	REFERENCE NO
82	W-228035	05	5Pin Wire:UL1571 #28 350mm	CN906 TO CON604
83			W/HOUSING JS-1124-5 2.0 PITCH	
84	W-826014	06	6Pin Wire:UL2651 #26 140mm	CON403 TO J202-203
85			W/HOUSING JS-1124-6 2.0 PITCH	
86	W-228018	06	6Pin Wire:UL1571 #28 180mm	CN902 TO CD DECK
87			W/HOUSING JS-1124-6 2.0 PITCH	
88	W-228040	08	8Pin Wire:UL1571 #28 400mm	CN907 TO CON607
89			W/HOUSING JS-1124-8 2.0 PITCH	
90	54-210015	12	Resistor: 10 ohm 1/16W	R225
91	54-218135	12	Resistor: 180 ohm 1/4W	R428
92	54-233135	12	Resistor: 330 ohm 1/4W	R107
93	54-247135	12	Resistor: 470 ohm 1/4W	R418
94	54-256135	12	Resistor: 560 ohm 1/4W	R501
95	54-215215	12	Resistor: 1.5K ohm 1/16W	R226.227
96	54-218235	12	Resistor: 1.8K ohm 1/4W	R921
97	54-227335	12	Resistor: 27K ohm 1/4W	R425.426.
98	54-210415	12	Resistor: 100K ohm 1/16W	R969
99	54-210415	12	Resistor: 100K ohm 1/16W	R609
100	54-210515	12	Resistor: 1M ohm 1/16W	R215
101	55-105066	12	Ceramic Cap: 5 PF	C110
102	55-107085	12	Ceramic Cap: 7 PF	C118
103	55-115066	12	Ceramic Cap: 15 PF	C109
104	55-122085	12	Ceramic Cap: 22 PF	C108.
105	55-125085	12	Ceramic Cap: 25 PF	C107
106	55-130085	12	Ceramic Cap: 30 PF	C102.103.104.117
107	55-133085	12	Ceramic Cap: 33 PF	C906.907.915.916
108	55-168066	12	Ceramic Cap: 68 PF	C917.918
109	55-114166	12	Ceramic Cap: 140PF (141)	C113
110	55-122165	12	Ceramic Cap: 220PF (221)	C423.424
111	55-147185	12	Ceramic Cap: 470PF (471)	C119
112	55-150185	12	Ceramic Cap: 500PF (501)	C227 (AB制用)
113	55-110266	12	Ceramic Cap: 0.001UF (102)	C203.204.414.415.506.938.946.951
114	55-110366	12	Ceramic Cap: 0.01UF (103)	C116.125.908.913.940.967
115	55-120366	12	Ceramic Cap: 0.02UF (203)	C106.211.212.501.502.503.504.J913
116	55-122366	12	Ceramic Cap: 0.022UF (223)	C111.123.429
117	55-133366	12	Ceramic Cap: 0.033UF (333)	C912.
118	55-140366	12	Ceramic Cap: 0.04UF (403)	C112
119	55-147366	12	Ceramic Cap: 0.047UF (473)	C121.909
120	55-168366	12	Ceramic Cap: 0.068UF (683)	C942
121	55-110436	12	Ceramic Cap: 0.1UF (104)	C508.910.936.939.947.950.199

REPLACEMENT PARTS LIST

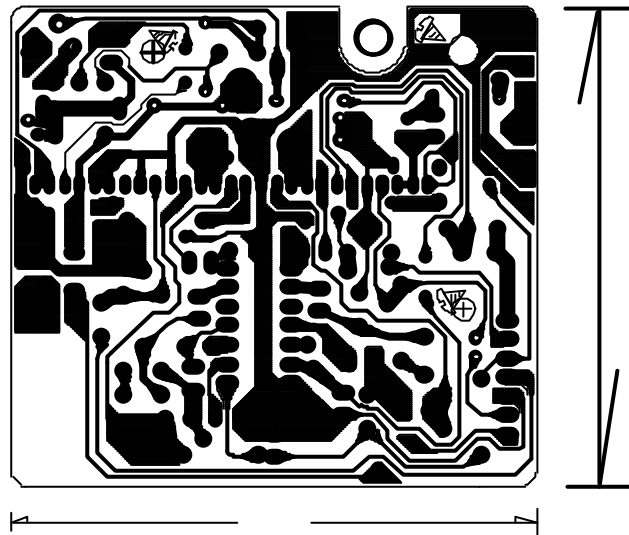
ITEM	PART NO	DASH	DESCRIPTION	REFERENCE NO
122	55-415286	12	Mylar Cap: 0.0015UF (152)	C954
123	55-410286	12	Mylar Cap: 0.001UF (102)	C128
124	55-422286	12	Mylar Cap: 0.0022UF (222)	C213.214.221.945
125	55-468286	12	Mylar Cap: 0.0068UF (682)	C931.948
126	55-410386	12	Mylar Cap: 0.01UF (103)	C932.953.
127	55-422386	12	Mylar Cap: 0.022UF (223)	C226
128	55-433386	12	Mylar Cap: 0.033UF (333)	C133.134.225.955
129	55-439366	12	Mylar Cap: 0.039UF (393)	C418.419.949
130	55-410486	12	Mylar Cap: 0.1UF (104)	C209.210.937
131	55-210437	12	Elect Cap: 0.1UF 16V	C943.966
132	55-222468	12	Elect Cap: 0.22UF 50V	C406.407
133	55-247437	12	Elect Cap: 0.47UF 16V	C911.914
134	55-210568	12	Elect Cap: 1UF 50V	C126.132.412.413.420.421.427.426.904.956
135	55-233537	12	Elect Cap: 3.3UF 16V	C201.202
136	55-233568	12	Elect Cap: 3.3UF 50V	C129.
137	55-247537	12	Elect Cap: 4.7UF 16V	C207.208.428.933
138	55-247568	12	Elect Cap: 4.7UF 50V	C127.135.136
139	55-210637	12	Elect Cap: 10UF 16V	C217.218.220.919.920.941.198
140	55-222637	12	Elect Cap: 22UF 16V	C120.934.957
141	55-247637	12	Elect Cap: 47UF 16V	C408.409.410.411.507
142	55-210737	12	Elect Cap: 100UF 16V	C105.131.224.228.416.
143				C425.902.903.921.952.958
144	55-222737	12	Elect Cap: 220UF 16V	C122.205.206.417.905.
145	55-233737	12	Elect Cap: 330UF 16V	C901
146	55-247737	12	Elect Cap: 470UF 16V	C219.402.404
147	55-247737	12	Elect Cap: 470UF 16V	C219
148	55-247748	12	Elect Cap: 470UF 25V	C405
149	55-222848	12	Elect Cap: 2200UF 25V	C505
150				
151	11-370068	01	Plastic: Front Cabinet (SILVER)	
152	11-370071	01	Plastic: Bottom Cabinet (SILVER)	
153	11-370081	01	Plastic: Battery Door (SILVER)	
154	11-370091	01	Plastic: Battery Door Bracket(GREY)	
155	11-370101	01	Plastic: Handle (SILVER)	
156	11-370111	01	Plastic: Handle Plate (SILVER)	
157	11-370125	01	Plastic: Volume Button	
158	11-370137	02	Plastic: Tuning Button GERY	
159	11-370146	01	Plastic: Volume Button Ring(SILVER)	
160	11-370161	05	Plastic: Gear (428C)	
161	11-370156	01	Plastic: Tuning Button Ring(SILVER)	

REPLACEMENT PARTS LIST

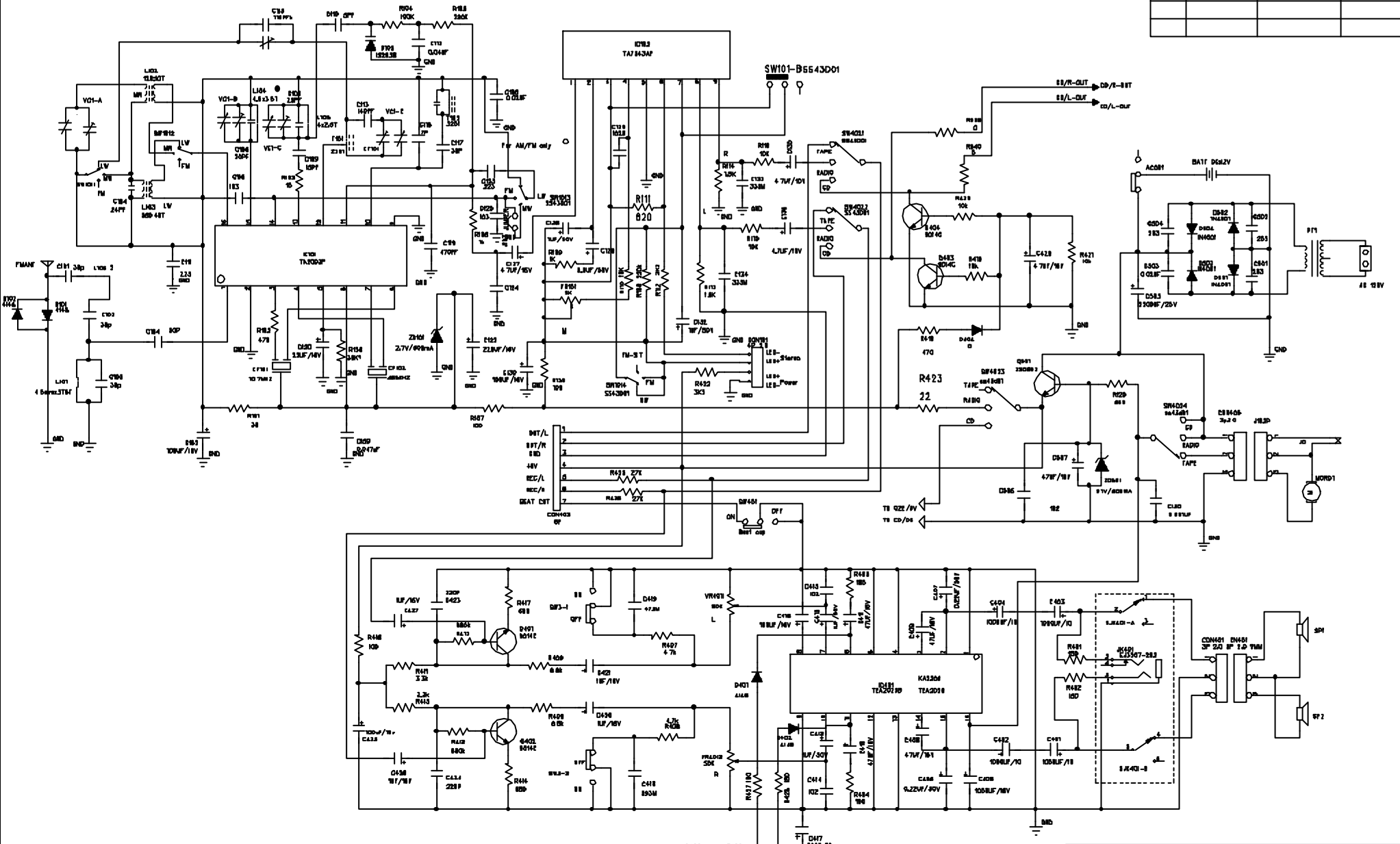
ITEM	PART NO	DASH	DESCRIPTION	REFERENCE NO
162	11-370235	01	Plastic: CD Switch Button (METALLIC BLUE)	
163	11-370241	05	Plastic: Post (428C)	
164	11-370178	01	Plastic: Band Button Ring	
165	11-370187	01	Plastic: Function Button Ring	
166	11-370192	01	Plastic: Bass Boost Button (SILVER)	
167	11-370201	01	Plastic: Function/Band Switch Button(SILVER)	
168	11-370227	01	Plastic: CD Display Panel	
169	11-370211	01	Plastic: Function Band Switch BKT. (SILVER)	
170	11-370255	11	Plastic: CD Display Lens	
171	11-370261	01	Plastic: Cassette Door Bracket	
172	11-370276	01	Plastic: Cassette Door Lens (TRANSPARENT)	
173	11-370289	03	Plastic: Cassette Door "AKAI" (DARK GREY)	
174	11-370291	05	Plastic: CD Door Gear Bracket (428C)	
175	11-370292	05	Plastic: Cass Door Gear Bracket (428C)	
176	11-370301	05	Plastic: CD Door Gear (428C)	
177	11-370302	05	Plastic: CASS. Door Gear (428C)	
178	11-370311	01	Plastic: Pause Knob (SILVER)	
179	11-370321	01	Plastic: Stop/EJ Knob	
180	11-370331	01	Plastic: F.F Knob	
181	11-370341	01	Plastic: Rew Knob	
182	11-370351	01	Plastic: Play Knob	
183	11-370385	02	Plastic: CD Bracket (Dark Grey)	
184	11-370361	01	Plastic: Rec Knob	
185	11-370399	03	Plastic: CD Door "AKAI" (Dark Grey)	
186	11-370402	02	Plastic: CD Door Lens (TRANSPARENT)	
187	11-370421	05	Plastic: CD Magnet Holder (428C)	
188	11-120470	02	Plastic: CD Dust Cover	
189	11-370441	01	Plastic: AC Socket Cover	
190	12-360011	01	Cassette Door Spring	
191	12-360021	01	CD Door Spring	
192	12-360031	01	Soldering Plate (For Rod Ant)	
193	12-360041	01	Speaker Clip	
194	11-370415	01	Plastic: CD Housing Magnet (425C)	
195	12-360056	01	Speaker Grill "L" Hole Φ 1.5mm (GREY)	
196	12-360066	01	Speaker Grill "R" Hole Φ 1.5mm (GREY)	
197	12-364031	01	Iron Plate (For CD Housing)	
198	14-021016	01	Plate: 21mmX16mm (SILVER)	
199	14-322018	03	Plate: 16.15(L)X21.15(W)MM	
200	15-360011	01	CD Rubber : SW-02-D658-30 "RED"	
201	15-360045	01	CD Rubber : SW-02-D658-45 "GREEN"	

REPLACEMENT PARTS LIST

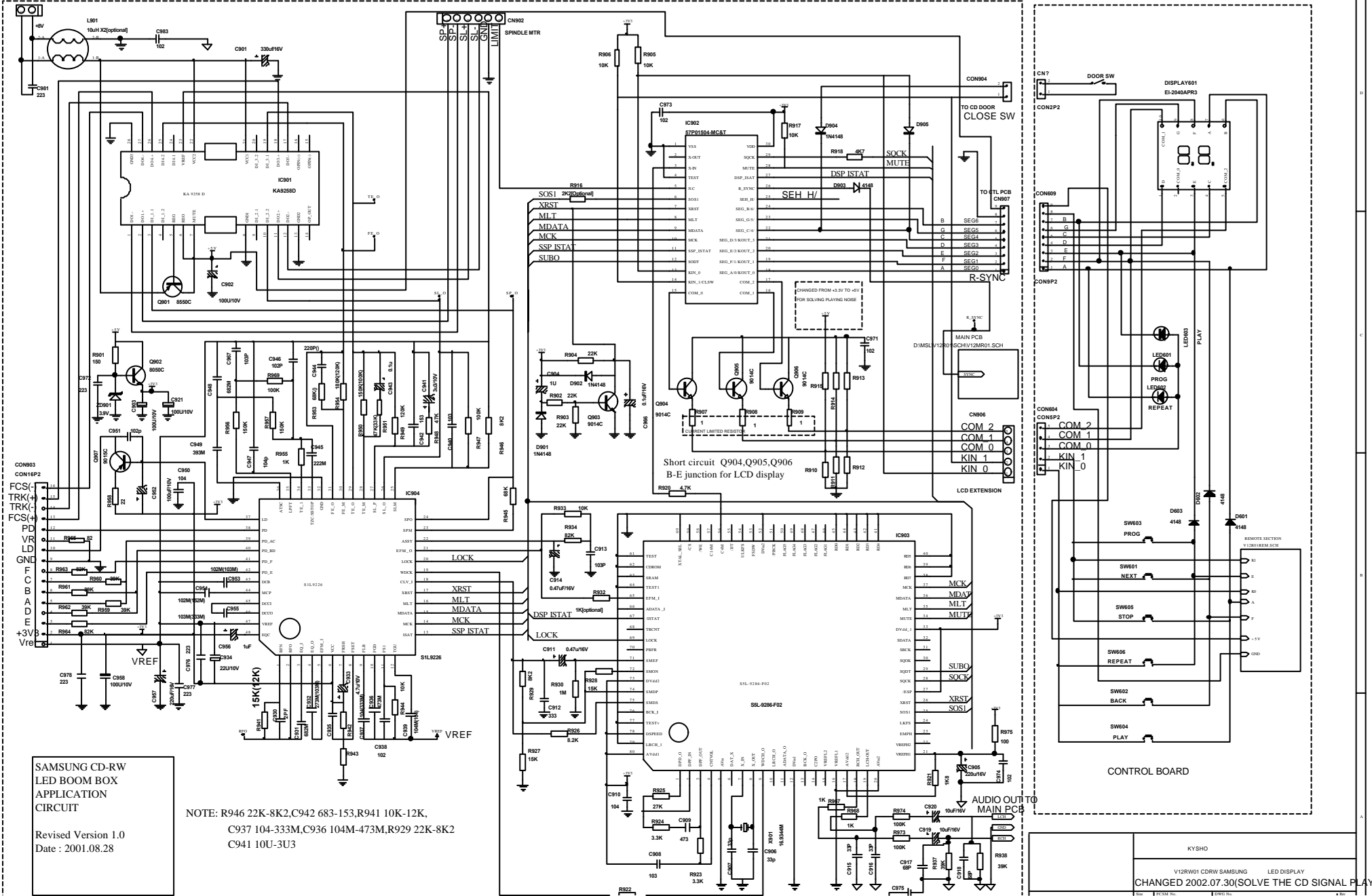
ITEM	PART NO	DASH	DESCRIPTION	REFERENCE NO
202	15-271818	01	Rubber: 27X18X18mm (BLACK)	
203	15-158020	01	Rubber Foot: Φ 15.8mmX2mm	
204	15-552525	02	Sponge: 55X25X25mm(For Battery Door)	
205	16-362006	PA	Screw: PA2X6 Tapping	
206	16-362612	PA	Screw: PA2.6X12 Tapping (5mm HEAD)	
207	16-363008	PA	Screw: PA3X8 Tapping	
208	16-363012	PA	Screw: PA3X12 Tapping	
209	16-363018	PA	Screw: PA3X18 Tapping	
210	16-362006	KA	Screw: KA2X6 Tapping	
211	16-303006	PWA	Screw: PWA3X6 Tapping Washer Φ 10mm	
212	16-203008	PWA	Screw: PWA3X8 Tapping Washer Φ 8mm	
213	16-203010	PWA	Screw: PWA3X10 Tapping Washer Φ 8mm	
214	16-203012	PWA	Screw: PWA3X12 Tapping Washer Φ 8mm	
215	16-302610	PWB	Screw: PWB2.6X10 Tapping Washer Φ 10mm	
216	16-363010	BA	Screw: BA3X10 Tapping	
217	16-362004	BM	Screw: BM2X4 Machine	
218	16-363008	BM	Screw: BM3X8 Machine	
219				
220	18-360011	02	Poly Bag:3X11X0.023" 02 PE-HD(For Ac Cord)	
221	18-360021	02	Poly Bag:16.5X20X0.04" 02 PE-HD(For Unit)	
222	18-360031	02	Poly Bag:6.5X10X0.023" 02 PE-HD(For I/B)	
223	19-360010	01	Laser Label N-3304	
224	19-360191	15	MODEL Label AKAI AJ-C3250	
225	19-V20140	01	Country code label "U6"	
226	19-360072	01	Class 1 Label 50(W)x22(H)mm LS-3306	
227	19-120080	01	Serial NO. Label	
228	19-360093	01	CD Protection Card	
229	19-360101	01	Caution Label	
230	19-360120	13	Gift Box AKAI GBF-2962	
231	19-360138	04	Master Carton 4PC/CTN 2-PLY AKAI	
232	216-080501	01	Poly Foam "L" W/Recycle Mark 70g	
233	216-080502	01	Poly Foam "R" W/Recycle Mark 69.5g	
234	22-010280	01	Silkscreen Black 3/8 280mm	
235	35-361119	01	Leaf Switch (For CD Door) Lsa-1119E	
236	37-350803	07	Speaker: 3.5" 8 OHM 3W Paper edage AL F92R40P83Q	
237	38-360107	01SS	Power Transformer: PE48-115/230-B01 (120V/230V)	
238	19-369141	14	Instruction Book AKAI IST-2962	
239	39-450180	02	AC CORD UL APP NISPT-2 18AWGx2C VW-1 (120V)	
240	40-301805	01	Magnet:30X18X5mm	
241				



REVISION			
LTR	ECD NO :	APPROVED	DATE:



KYSHO Multimedia LTD.	
MODEL: SKC-V6	PD6518
DRAWN: MILLION	DATE: 2000 D3.03



SAMSUNG CD-RW
LED BOOM BOX
APPLICATION
CIRCUIT

Revised Version 1.0
Date : 2001.08.28

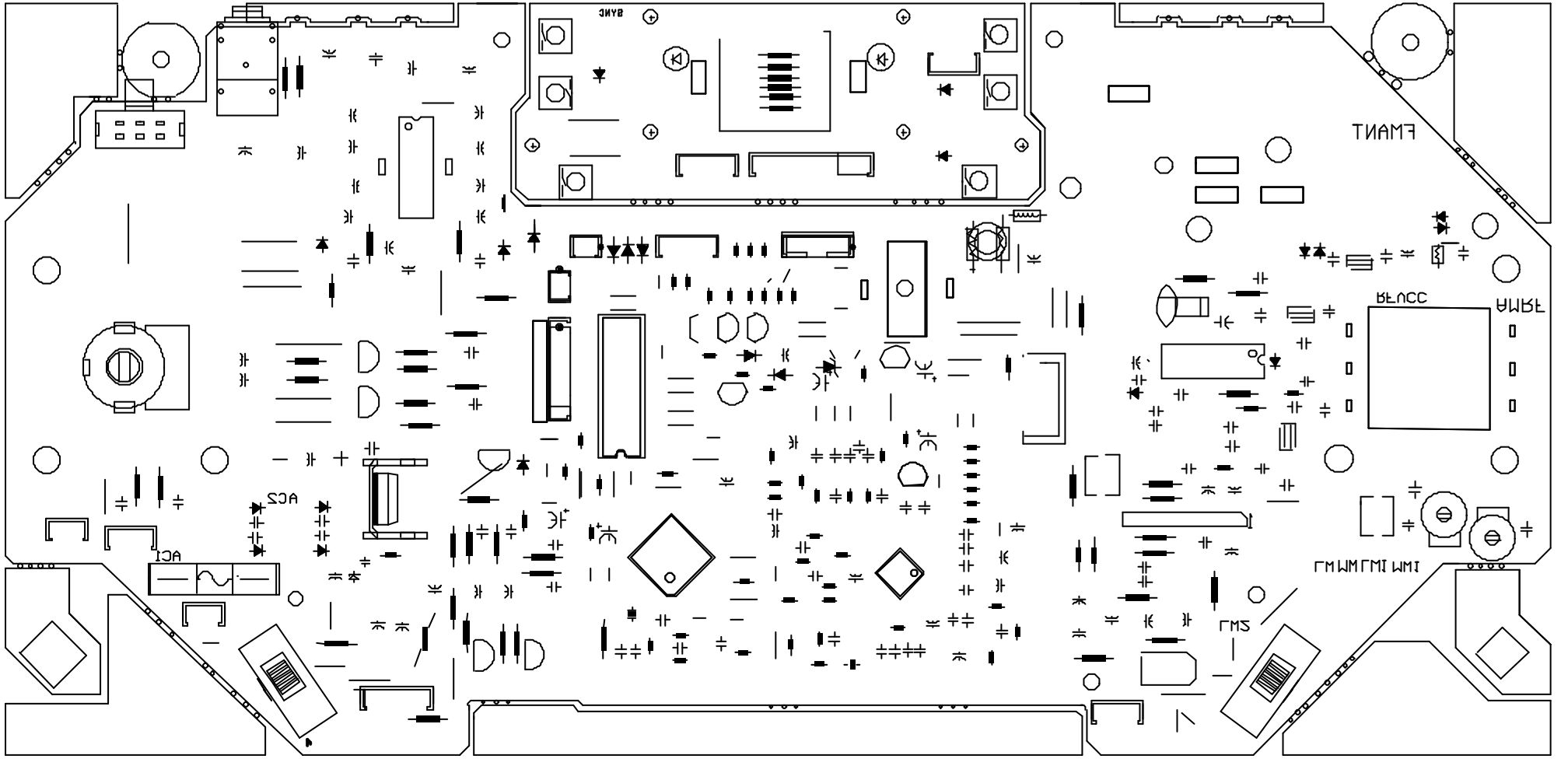
NOTE: R946 22K-8K2, C942 683-153, R941 10K-12K,
C937 104-333M, C936 104M-473M, R929 22K-8K2
C941 10U-3U3

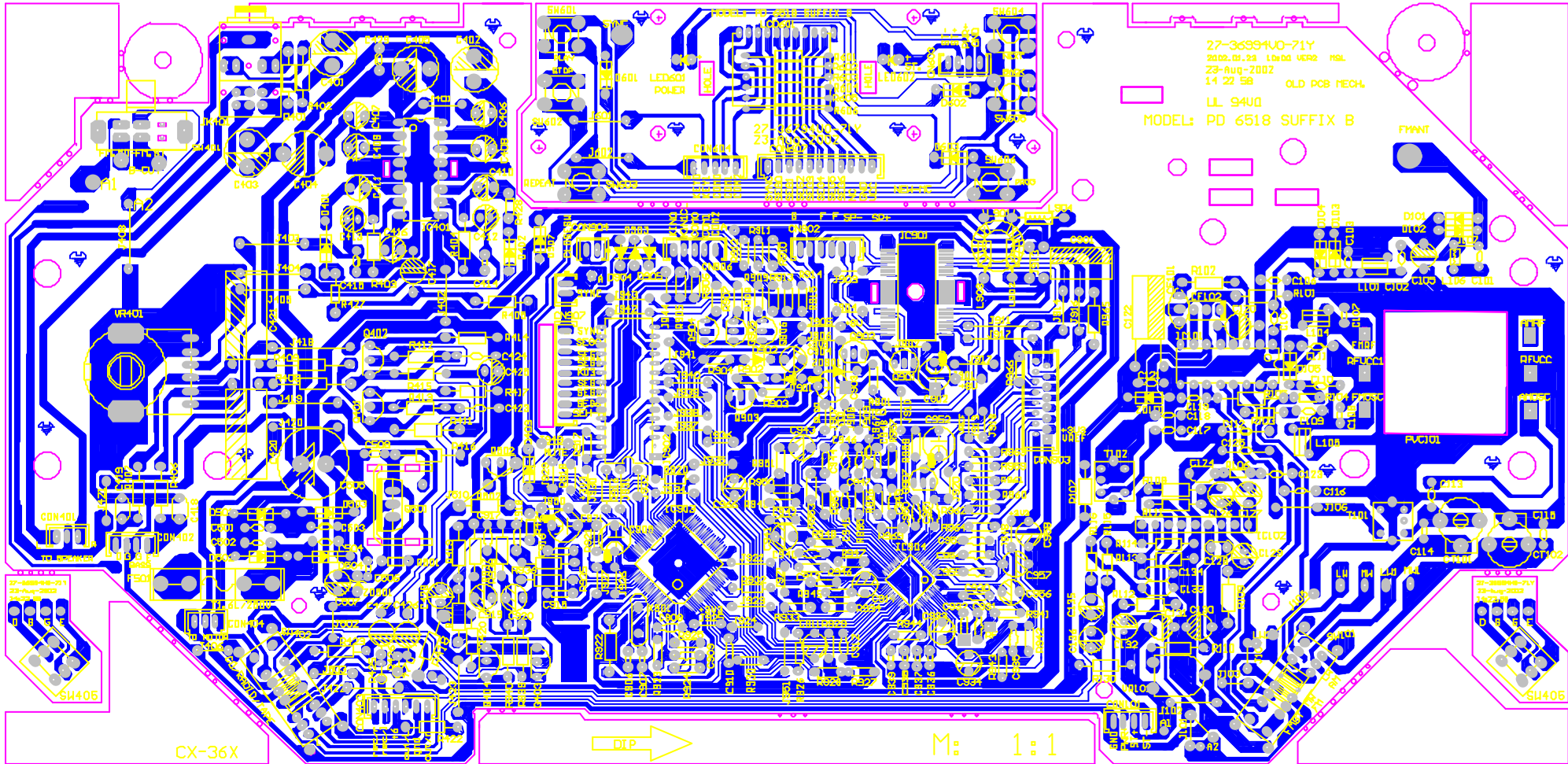
Short circuit Q904, Q905, Q906
B-E junction for LCD display

CONTROL BOARD

KYSHO

V12R001 CD RW SAMSUNG LED DISPLAY
CHANGED 2002.07.30 (SOLVE THE CD SIGNAL PLAY NOISE)





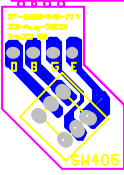
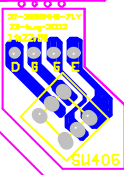
27-36364U0-71Y
2010.09.29 L1000 VER2 HSL
23-AUG-2002
14 22 58 OLD PCB TECH.
LL 94U0
MODEL: PD 6518 SUFFIX B

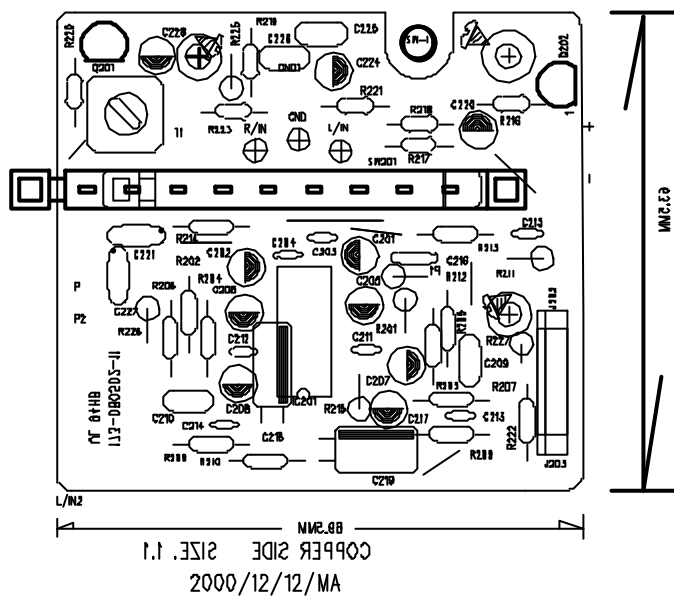
CX-36X

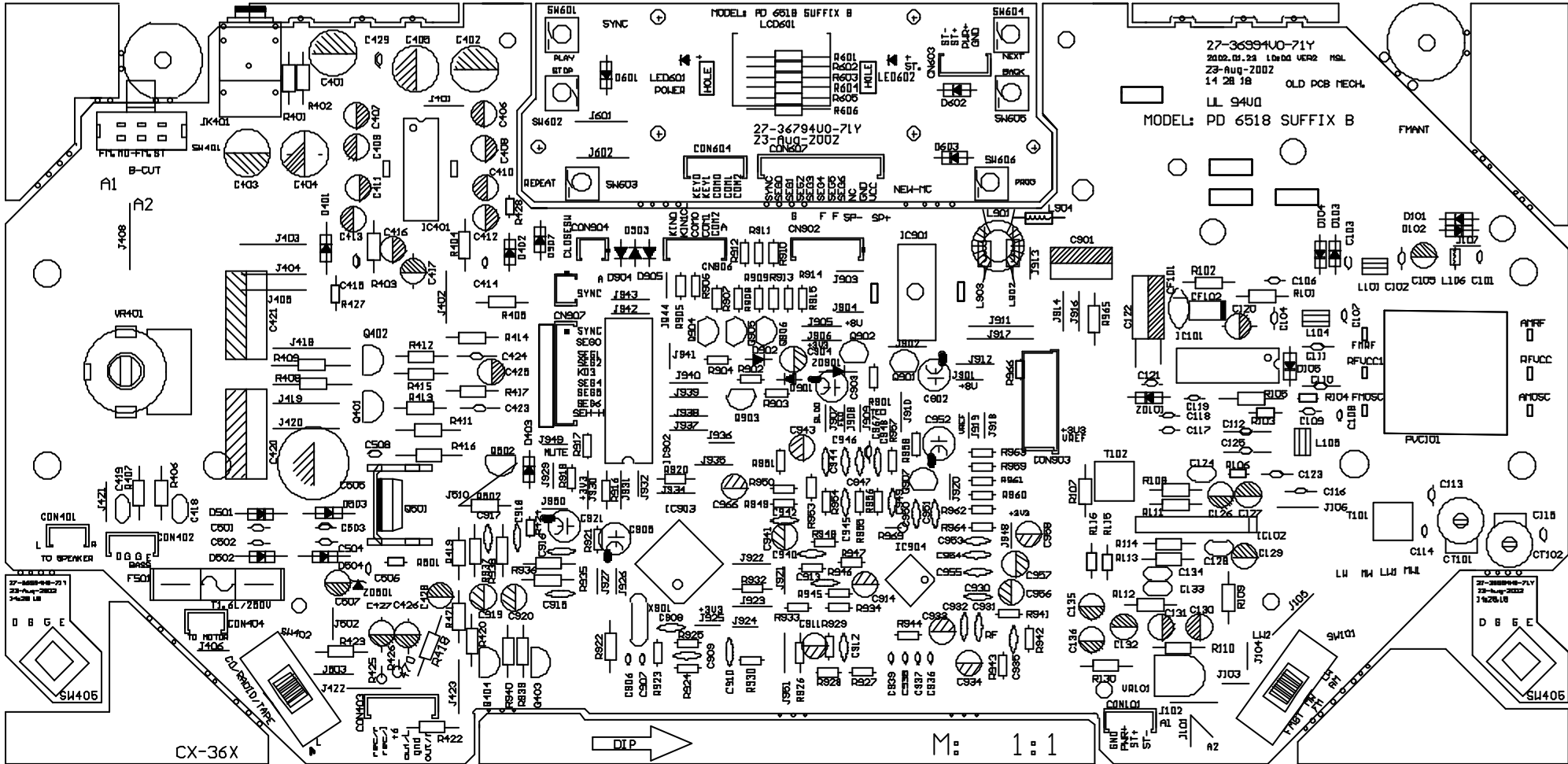
DTP

M: 1:1

FRONT







27-36794U0-71Y
23-AUG-2002 11:00 VER2 HSL
23-AUG-2002
14 28 18 OLD PCB TECH.
LL 94U0
MODEL: PD 6518 SUFFIX B

27-36794U0-71Y
23-AUG-2002
CON607

MODEL: PD 6518 SUFFIX B
LCD601

27-36794U0-71Y
23-AUG-2002
14 28 18

CX-36X

M 1 1

DIP

D B E

D B E

FRONT
FRONT
FRONT

A1
A2

J408
J409

J401
J402

J403
J404

J405
J406

J407
J408

J409
J410

J411
J412

J413
J414

J415
J416

J417
J418

J419
J420

J421
J422

J423
J424

J425
J426

J427
J428

J429
J430

J431
J432

J433
J434

J435
J436

J437
J438

J439
J440

J441
J442

J443
J444

J445
J446

J447
J448

J449
J450

J451
J452

J453
J454

J455
J456

J457
J458

J459
J460

J461
J462

J463
J464

J465
J466

J467
J468

J469
J470

J471
J472

J473
J474

J475
J476

J477
J478

J479
J480

J481
J482

J483
J484

J485
J486

J487
J488

J489
J490

J491
J492

J493
J494

J495
J496

J497
J498

J499
J500

J501
J502

J503
J504

J505
J506

J507
J508

J509
J510

J511
J512

J513
J514

J515
J516

J517
J518

J519
J520

J521
J522

J523
J524

J525
J526

J527
J528

J529
J530

J531
J532

J533
J534

J535
J536

J537
J538

J539
J540

J541
J542

J543
J544

J545
J546

J547
J548

J549
J550

J551
J552

J553
J554

J555
J556

J557
J558

J559
J560

J561
J562

J563
J564

J565
J566

J567
J568

J569
J570

J571
J572

J573
J574

J575
J576

J577
J578

J579
J580

J581
J582

J583
J584

J585
J586

J587
J588

J589
J590

J591
J592

J593
J594

J595
J596

J597
J598

J599
J600

J601
J602

J603
J604

J605
J606

J607
J608

J609
J610

J611
J612

J613
J614

J615
J616

J617
J618

J619
J620

J621
J622

J623
J624

J625
J626

J627
J628

J629
J630

J631
J632

J633
J634

J635
J636

J637
J638

J639
J640

J641
J642

J643
J644

J645
J646

J647
J648

J649
J650

J651
J652

J653
J654

J655
J656

J657
J658

J659
J660

J661
J662

J663
J664

J665
J666

J667
J668

J669
J670

J671
J672

J673
J674

J675
J676

J677
J678

J679
J680

J681
J682

J683
J684

J685
J686

J687
J688

J689
J690

J691
J692

J693
J694

J695
J696

J697
J698

J699
J700

J701
J702

J703
J704

J705
J706

J707
J708

J709
J710

J711
J712

J713
J714

J715
J716

J717
J718

J719
J720

J721
J722

J723
J724

J725
J726

J727
J728

J729
J730

J731
J732

J733
J734

J735
J736

J737
J738

J739
J740

J741
J742

J743
J744

J745
J746

J747
J748

J749
J750

J751
J752

J753
J754

J755
J756

J757
J758

J759
J760

J761
J762

J763
J764

J765
J766

J767
J768

J769
J770

J771
J772

J773
J774

J775
J776

J777
J778

J779
J780

J781
J782

J783
J784

J785
J786

J787
J788

J789
J790

J791
J792

J793
J794

J795
J796

J797
J798

J799
J800

J801
J802

J803
J804

J805
J806

J807
J808

J809
J810

J811
J812

J813
J814

J815
J816

J817
J818

J819
J820

J821
J822

J823
J824

J825
J826

J827
J828

J829
J830

J831
J832

J833
J834

J835
J836

J837
J838

J839
J840

J841
J842

J843
J844

J845
J846

J847
J848

J849
J850

J851
J852

J853
J854

J855
J856

J857
J858

J859
J860

J861
J862

J863
J864

J865
J866

J867
J868

J869
J870

J871
J872

J873
J874

J875
J876

J877
J878

J879
J880

J881
J882

J883
J884

J885
J886

J887
J888

J889
J890

J891
J892

J893
J894

J895
J896

J897
J898

J899
J900

J901
J902

J903
J904

J905
J906

J907
J908

J909
J910

J911
J912

J913
J914

J915
J916

J917
J918

J919
J920

J921
J922

J923
J924

J925
J926

J927
J928

J929
J930

J931
J932

